



Healthy Canada by Design CLASP Initiative

Multi-Sectoral Collaboration and the Development of Multi-Sectoral Tools and Resources

Presentation to Health Officer's Council
April 10 2013



HCBD CLASP Vision Statement

Health officials, planners, engineers and NGOs in communities across Canada collaborate seamlessly to ensure built environments are designed to promote health and well-being, thus contributing to the reduction of risk factors for chronic diseases.

Photo: Amanda Mitchell



Presentation Outline

- ❖ HCBD CLASP1
 - ❖ Partners – why these partners were selected
 - ❖ Outcomes
 - ❖ **A tool in depth**
 - ❖ Lessons learned
- ❖ HCBD CLASP1 Renewal
 - ❖ Themes – why new partners were selected
 - ❖ Partners
 - ❖ Knowledge Translation



Photo: Gene Chin, Vancouver, BC

HCBD CLASP 1 - Partners

Four National Organizations

- ❖ Heart & Stroke Foundation (HSF) – Secretariat
- ❖ National Collaborating Centre Healthy Public Policy (NCCHPP)
- ❖ Canadian Institute of Planners (CIP)
- ❖ Urban Public Health Network (UPHN)



Centre de collaboration nationale
sur les politiques publiques et la santé

National Collaborating Centre
for Healthy Public Policy



CANADIAN INSTITUTE
OF PLANNERS

INSTITUT CANADIEN
DES URBANISTES

*Shaping our Communities
Sustaining Canada's Future*

*Bâtir nos communautés
Pour un Canada viable*



URBAN PUBLIC HEALTH NETWORK

RÉSEAU CANADIEN POUR LA SANTÉ URBAINE

HCBD CLASP1 – Partners (cont)

Six Health Authorities

- ❖ Montreal Public Health
- ❖ Toronto Public Health
- ❖ Peel Public Health
- ❖ Vancouver Coastal Health
- ❖ Fraser Health Authority
- ❖ Vancouver Island Health Authority



HCBD CLASP1 - Outcomes

- ❖ Capacity Building within Health Authorities / Health Regions
- ❖ Community of Practice – Knowledge Exchange
- ❖ Resources
- ❖ Tools



Photo: K. Perrotta, Kawartha Lakes, Ontario

HCBD CLASP1 - Projects

❖ Research

- ❖ Residential Preferences Survey (GTA & Metro Vancouver)
- ❖ Montreal Community Engagement
- ❖ James Bay Community Engagement (Victoria)

❖ Health Impact Tools

- ❖ Health Background Study (Peel & Toronto Public Health)
- ❖ Health Enhanced Planning Software Tool (piloted in Peel Region & Surrey)
- ❖ **Healthy Development Index (Peel Region)**

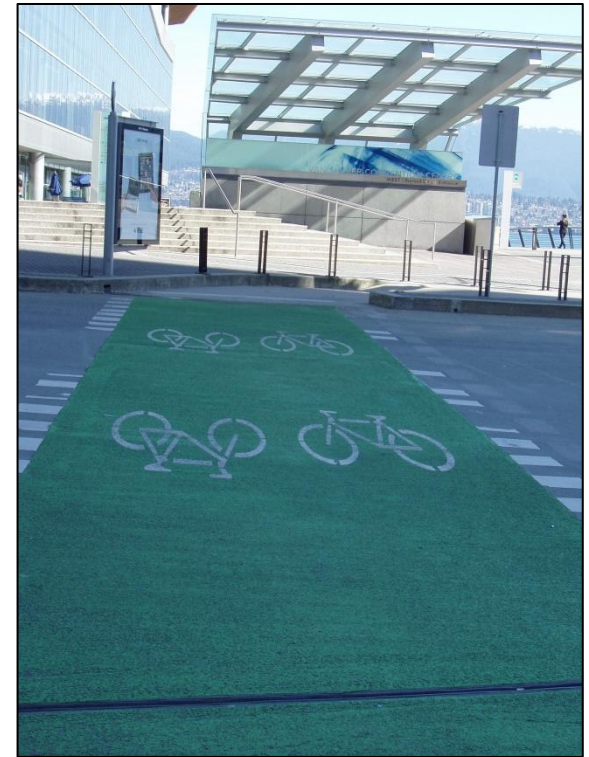


Photo: Gene Chin, Vancouver, BC

HCBD CLASP1 - Lessons Learned

- ❖ **Collaboration** between Public Health and Planners needed
 - ❖ Awareness about links between health & the built environment
 - ❖ Planners can lead, but need to bring Public Health in early in the process
 - ❖ Public Health needs to be clear to Planners
- ❖ **Context Is Everything**
Geographic; Big City vs. Suburbs vs. Small Towns vs. Rural Communities
- ❖ Gap in information and resources: **Rural & Mid-Sized Communities**



Photo: Gene Chin, Vancouver, BC

HCBD CLASP1 Renewal - Themes

- ❖ **Deepen the Impact** from CLASP1 – build on the projects and lessons learned with existing partners
- ❖ **Broaden the Impact** of CLASP1
 - ❖ apply the tools and resources from CLASP1 into other areas of the country
 - ❖ Ensure that there are projects in rural & mid-sized communities



Photo: K. Perrotta, Waterloo, Ontario

HCBD CLASP1 Renewal – Deepening Impact

- ❖ **Stimulate Health-Promoting Street Designs** (National Collaborating Centre for Healthy Public Policy & Canadian Institute of Transportation Engineers/Peel Region)
- ❖ **Examine the data available and data needs to ensure healthy built environment decisions can be made** (Vancouver Coastal Health/Fraser Health with Simon Fraser University, Montreal Public Health)
- ❖ **Community Engagement** (Toronto Centre for Active Transportation /Toronto Public Health)

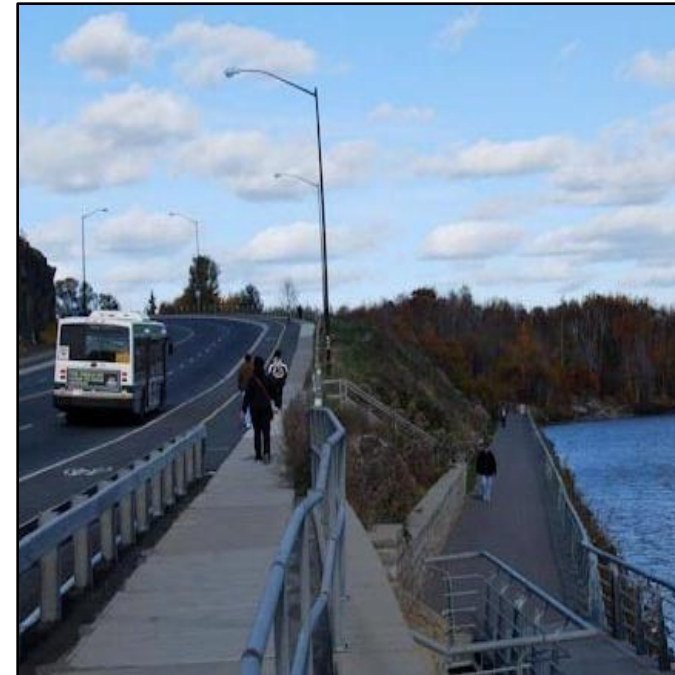


Photo: K. Perrotta, Sudbury, Ontario

HCBD CLASP1 Renewal – Broadening Impact

Broadening into New Jurisdictions & into Rural Context

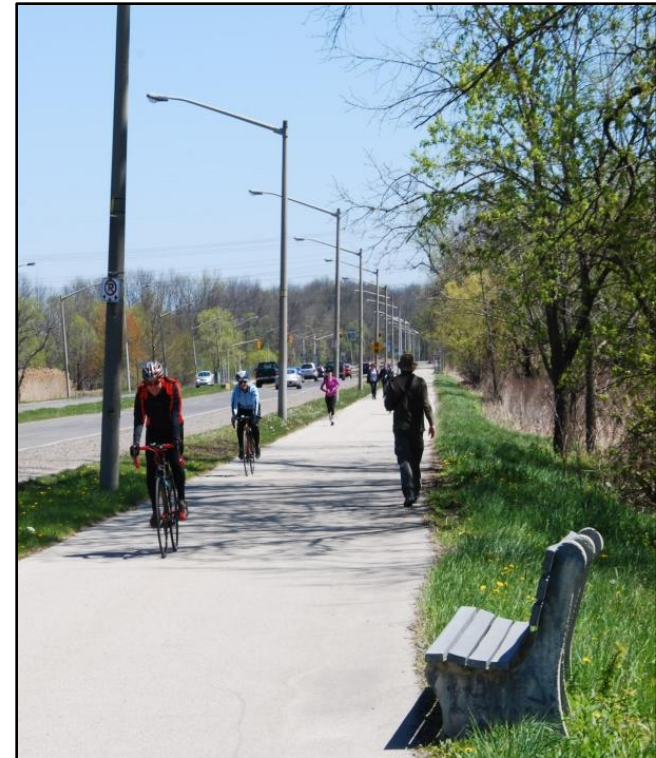
- ❖ Support 6 Health Authorities to engage in planning processes – 4 of 6 include a significant rural context

Each Health Authority:

- ❖ Supported by contracted Planning Facilitators
- ❖ Focus on strategic opportunities re: active transportation & active design at a local level
- ❖ Mentoring by peers, CLASP partners & Dr. Karen Lee - focus on problem-solving & collaboration
- ❖ Capacity building – “learn by doing”

HCBD CLASP1 Renewal – New Partners

- ❖ Regina Qu'Appelle Health Region
- ❖ Winnipeg Region Health Authority
- ❖ Ottawa Public Health
- ❖ New Brunswick Health
- ❖ Capital District Health Authority (NS)
- ❖ Eastern Health Region/Newfoundland
Provincial Wellness Advisory Council
- ❖ Toronto Centre for Active Transportation
- ❖ Montreal Urban Ecology Centre
- ❖ Canadian Institute of Transportation
Engineers



HCBD CLASP1 Renewal – Knowledge Translation & Exchange



Peer to Peer Mentorship

- ❖ Regular teleconferences with all Health Authority project teams together

Community of Practice (CofP)

- ❖ Teleconferences & webinars on topics of common interest for all members of CLASP

Strategic Support

- ❖ Strategic advice by leading policy & practice experts
- ❖ **Webinars on CLASP Renewal Projects**
- ❖ Convene national webinars for broader network

Web & Social Media

- ❖ Establish a hub website with blogs & social media

Conferences, Journals & Media

- ❖ Present CLASP work through presentations, articles & media

Thanks to our Funder!

- ❑ Production of this presentation has been made possible through a financial contribution from **Health Canada**, through the **Canadian Partnership Against Cancer**.
- ❑ The views expressed in this presentation represent the views of Healthy Canada by Design & do not necessarily represent the views of the project funder





Contact Information

Gene Chin, Project Manager

gchin@hsf.ca 604-685-7036

Kim Perrotta, Knowledge Translation Coordinator

kperrotta@hsf.ca 905-627-2157

