



Healthy Canada by Design CLASP II

Telehealth Event: Built Environment & its Impact on Public Health

Organized by: Regina Qu'Appelle Health Region

Kim Perrotta, Knowledge Translation Coordinator, HCBD CLASP

September 10, 2013



HCBD CLASP Vision Statement



Health officials, planners, engineers and NGOs in communities across Canada collaborate seamlessly to:

- ❑ ensure built environments are designed to promote health and well-being,
- ❑ thus contributing to the reduction of risk factors for chronic diseases.



Partners – HCBD CLASP I

Four National Organizations

- ❖ Heart & Stroke Foundation
- ❖ National Collaborating Centre Healthy Public Policy
- ❖ Canadian Institute of Planners
- ❖ Urban Public Health Network



URBAN PUBLIC HEALTH NETWORK
RÉSEAU CANADIEN POUR LA SANTÉ URBAINE



Centre de collaboration nationale
sur les politiques publiques et la santé
National Collaborating Centre
for Healthy Public Policy

Region of Peel
Working for you
Public Health

Six Health Authorities

- ❖ Montreal Public Health
- ❖ Toronto Public Health
- ❖ Peel Public Health
- ❖ Vancouver Coastal Health
- ❖ Fraser Health Authority
- ❖ Vancouver Island Health Authority



Toronto
Public Health



HCBD CLASP I Outcomes - Examples

Peel Region:

- ❖ **Healthy Development Index –**
Developed health-based criteria to guide neighbourhood design in Peel Region
- ❖ **Relationship-Building –**
Developed relationships with Planners at the Region & in the local municipalities

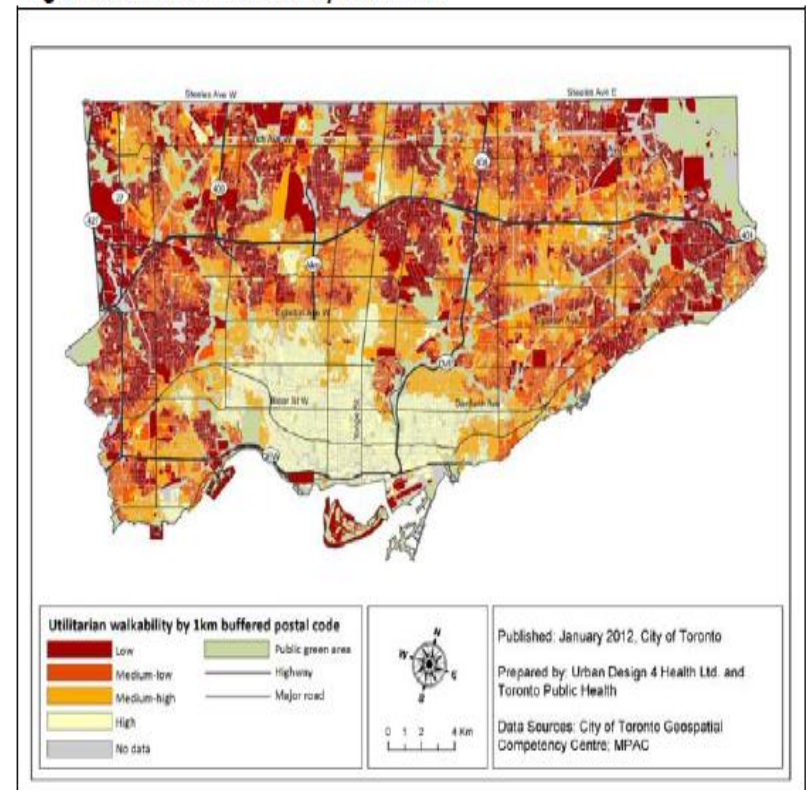
	Region of Peel Health Background Study USER GUIDE
	April 1, 2011 Prepared by The Planning Partnership

HCBD CLASP I Outcomes - Examples

Toronto:

- ❖ **Raise Awareness** - The Walkable City report – based on Residential Preferences Survey – Evidence of public support for “walkable” features
- ❖ **Software Tool** – Piloted in 2012; Training in 2013
- ❖ **Active City Project** – Laid groundwork for collaboration across three departments to address barriers in Toronto

Figure 2: Utilitarian Walkability in Toronto



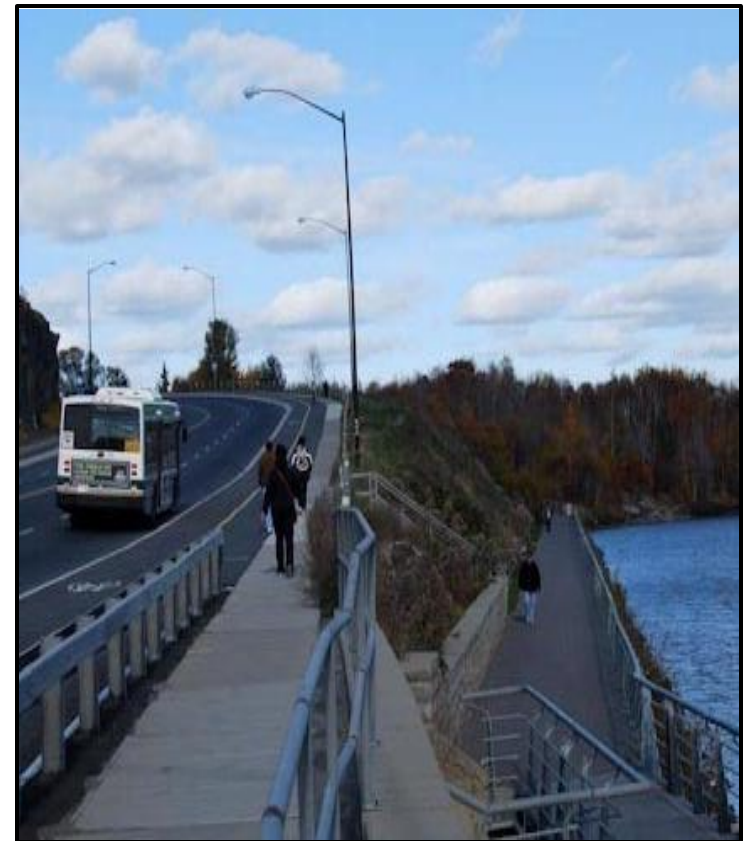
HCBD CLASP I - Lessons Learned

- ❖ Health authorities & Planners **can affect change in policies** re: community design when they collaborate
- ❖ Collaboration between sectors needed to overcome **barriers** that are preventing changes needed in community design
- ❖ Need to bring **transportation** professionals into the process to address road blocks
- ❖ Need more **knowledge translation** to help implement the policies and programs in other jurisdictions



Aspirations – HCBD CLASP II

- ❖ Work to affect policy change re: community design in **new jurisdictions** & provinces
- ❖ Pilot effective approaches for policy changes in **rural contexts**
- ❖ Address **challenges** identified in HCBD CLASP I re: data limitations & road design
- ❖ Bring **transportation** professionals into the process
- ❖ Deepen **knowledge translation** to increase efficacy



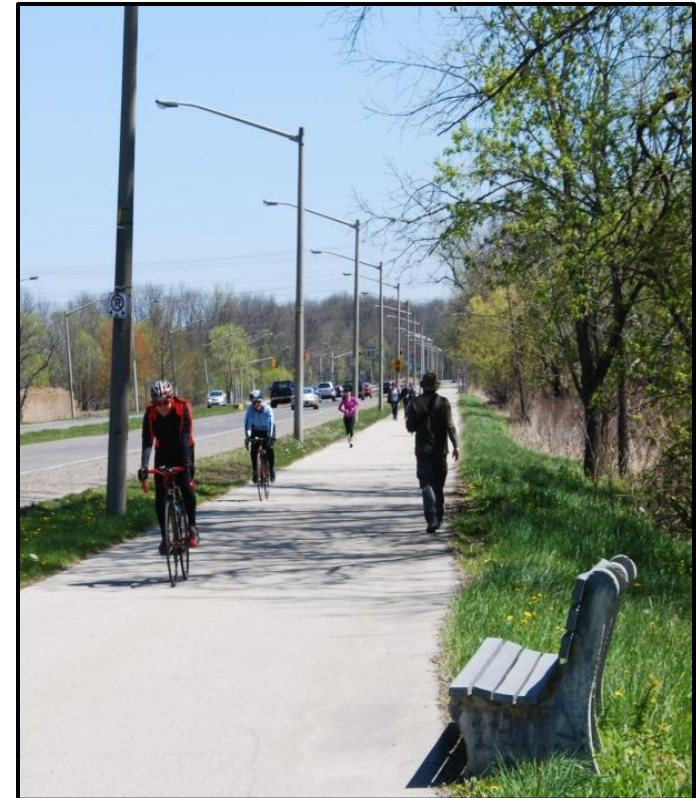
New Partners – HCBD CLASP II

National Partner

- ❖ Canadian Institute of Transportation Engineers

Health Authorities

- ❖ Newfoundland and Labrador Provincial Wellness Advisory Council/Eastern Health Region
- ❖ Capital District Health, Nova Scotia
- ❖ New Brunswick Health
- ❖ Regina Qu'Appelle Health Region
- ❖ Winnipeg Region Health Authority
- ❖ Ottawa Public Health



HCBD CLASP II Objectives: Theme 1

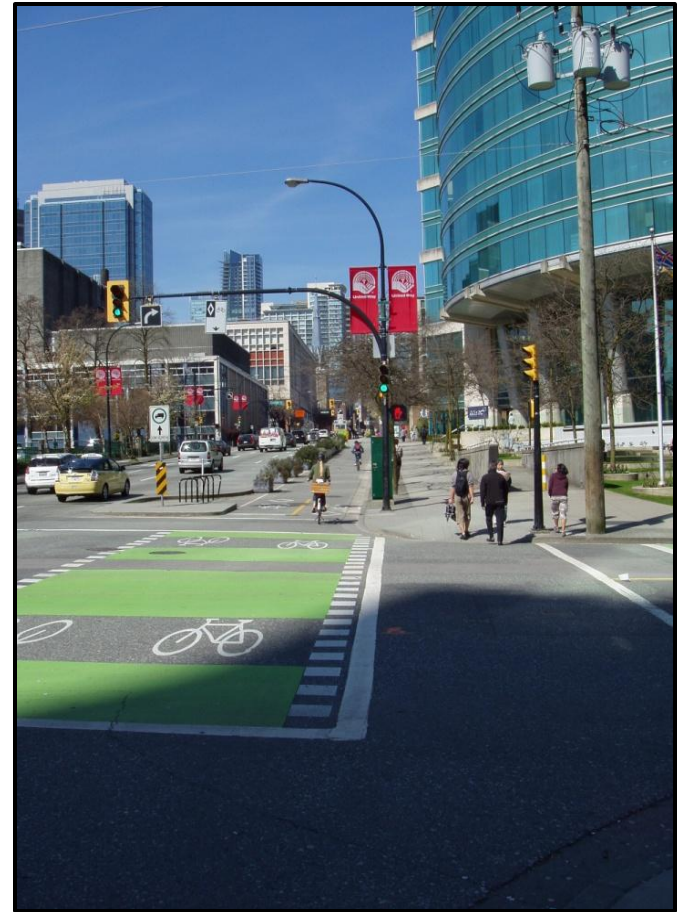
Broadening Partnership into New Jurisdictions & Rural Context

- ❖ Support 6 Health Authorities to engage in land use &/or transportation planning processes
- ❖ Improve the built environment
 - ❖ 1 new in Ontario
 - ❖ 2 Prairie Provinces
 - ❖ 3 Atlantic Provinces
 - ❖ 4 of 6 have significant rural populations



HCBD Health Authority Projects

- ❖ Each Project Team is supported by a Planning Facilitator
- ❖ **Planning Facilitator** will:
 - ❖ Identify strategic opportunities to influence active transportation & active design at a local level
 - ❖ Facilitate relationship building between sectors
- ❖ **Twin Goals:**
 - ❖ Affect policy at a local level
 - ❖ Build Capacity within Health Authorities



HCBD CLASP II Objectives: Theme 2

Building on Lessons Learned & Addressing Challenges from Phase I

- ❖ Five projects
- ❖ One directed at Community Engagement re: active transportation
- ❖ Two directed at stimulating innovative street designs that support active transportation
- ❖ Two directed at the data needed to support policy & program development re: active transportation



Deepening Projects

Community Engagement:

- ❖ Toronto Public Health & Toronto Centre for Active Transportation

Innovative Street Design:

- ❖ Canadian Institute of Transportation Engineers & Peel Health – case studies
- ❖ National Collaborating Centre for Healthy Public Policy & a small municipality



Deepening Projects

Translating Data to Action:

- ❖ Vancouver Coastal Health & Fraser Health & Simon Fraser University
 - ❖ Reviews data available, data needs and data sharing re: active transportation & transit
- ❖ Montreal Public Health & University of Montreal
 - ❖ Develop a data needs/plan for conducting health impact assessments for transportation scenarios



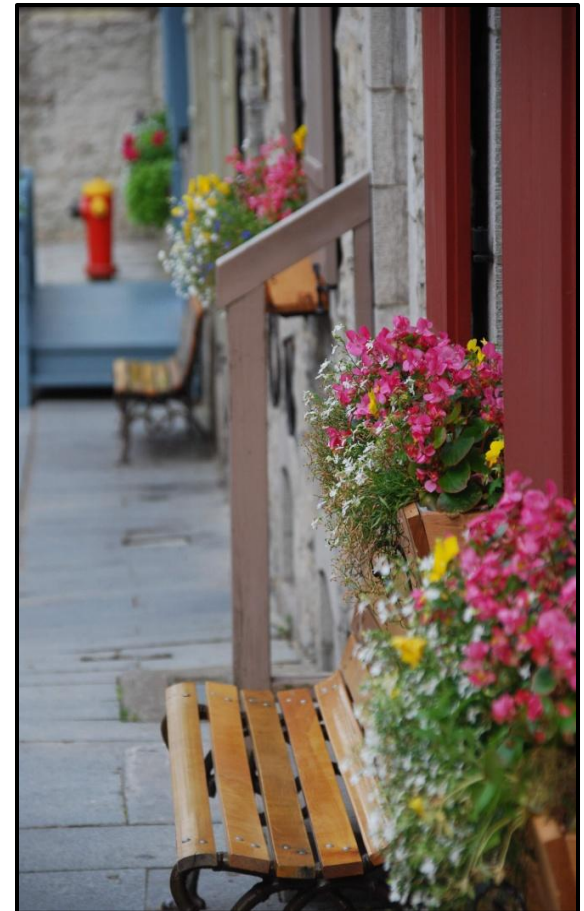
Knowledge Translation & Exchange

Peer to Peer Mentorship

- ❖ Strategic & technical advice from CLASP staff & peers
- ❖ Supported by consultant, Dr. Karen Lee, Built Environment Advisor, NYC
- ❖ Peer to Peer Sessions

Community of Practice (CofP)

- ❖ Cultivate relationships across partners & disciplines
- ❖ Convene CLASP-wide teleconferences with guest speakers
- ❖ Convene Face to Face Meeting



Webinar Series for Broader Sectors

- ❑ Showcare HCBC CLASP II Projects to planners, public health, health & transportation professionals across the country
- ❑ Share challenges, accomplishments & lessons learned

Use Social Media to Share

- ❑ Hub Website to link to partners & share resources & information
- ❑ Use Blogs & twitter to communicate with broader network





Contact Information

Kim Perrotta, Knowledge Translation Coordinator

kperrotta@hsf.ca 905-627-2157

Gene Chin, Project Manager

gchin@hsf.ca 604-685-7036

<http://hcbd-clasp.com/>

Twitter@hcbdclasp

