

# Collaborating for a Healthy Built Environment

Newfoundland and Labrador

CPHA National Conference, Toronto

May 2014

Mary Bishop, FCIP  
Senior Project Manager,  
CBCL Limited

CLASP Planning Facilitator



# Structure

- Provincial Wellness Advisory Council (PWAC)
- Built Environment Focus
- Building Healthy Communities Collaborative



BUILDING HEALTHY COMMUNITIES

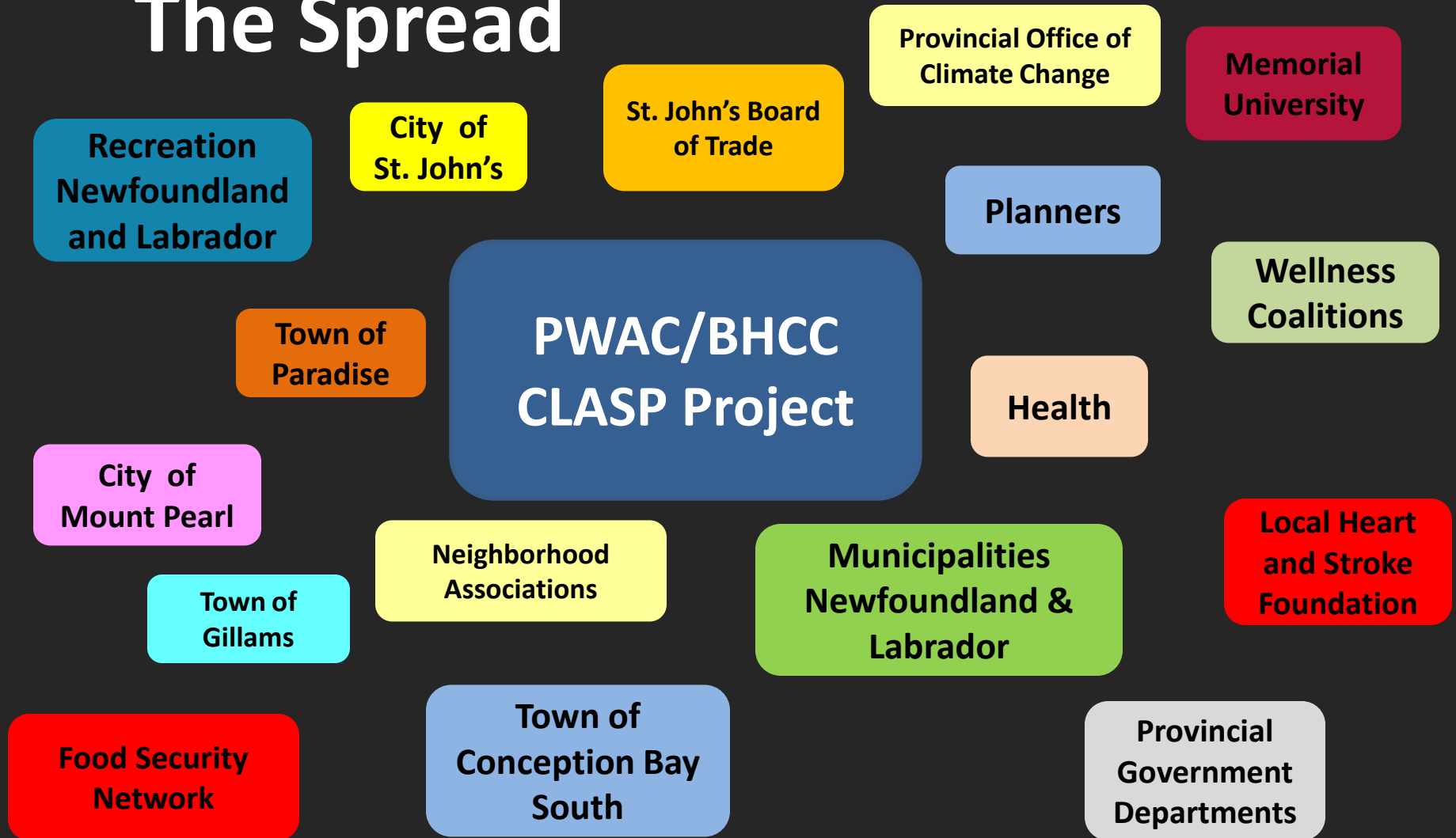
# What We Did

- Workshop
- Networking
- Dr. Karen Lee



BUILDING HEALTHY COMMUNITIES

# The Spread





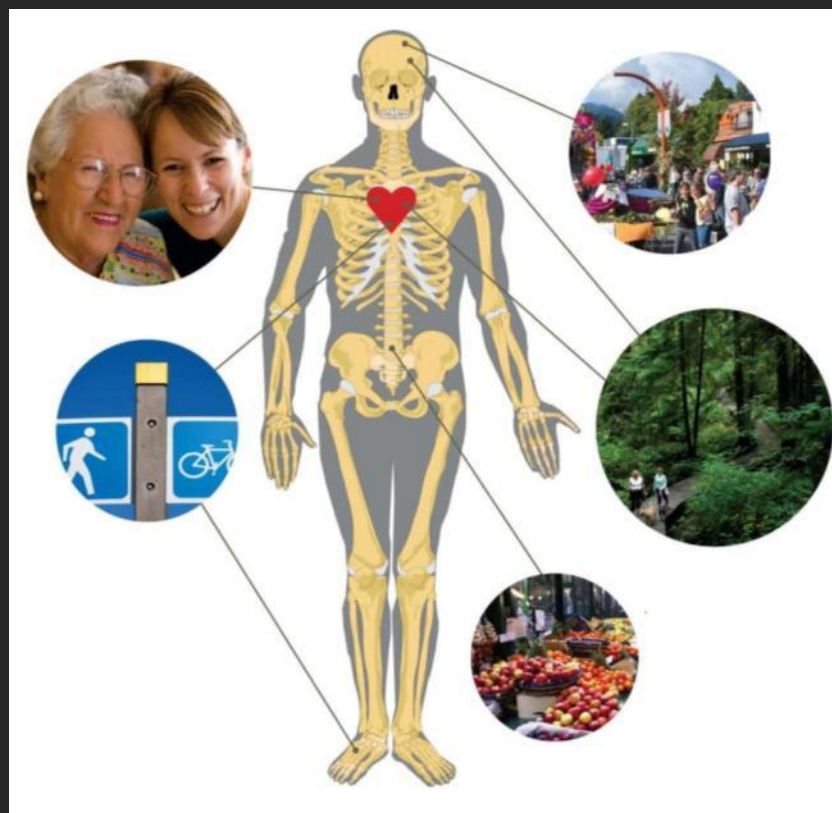
# Tidy Towns NL

- Beautification Competition
- Fosters Civic Pride
- 8 Criteria Evaluation
- Population Categories
- Emphasis on Participation
- Awards



# What We Did

- Health Questions
- Judges Training
- Well ❤️ Minded Community Award
- Sponsor
- 2014 Program




# Simple things can have the greatest impact

- 41 Communities
- Norris Point – Pop. 685
- Communities in Bloom
- New Opportunities Identified





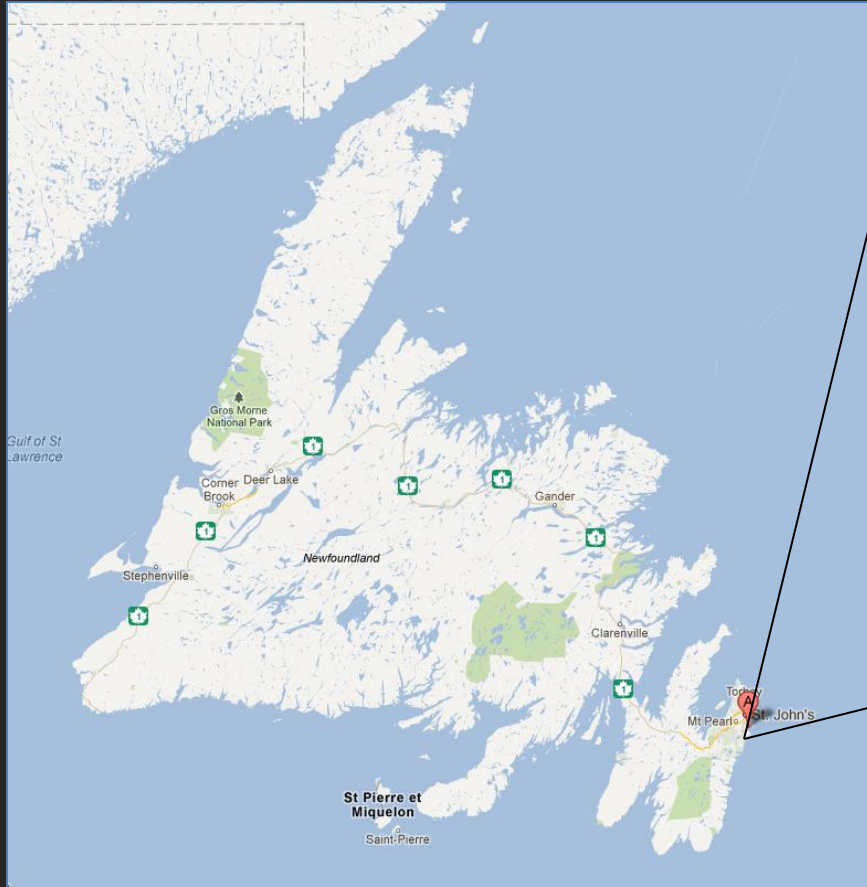


# Petty Harbour- Maddox Cove Municipal Plan Review

2012 - 13



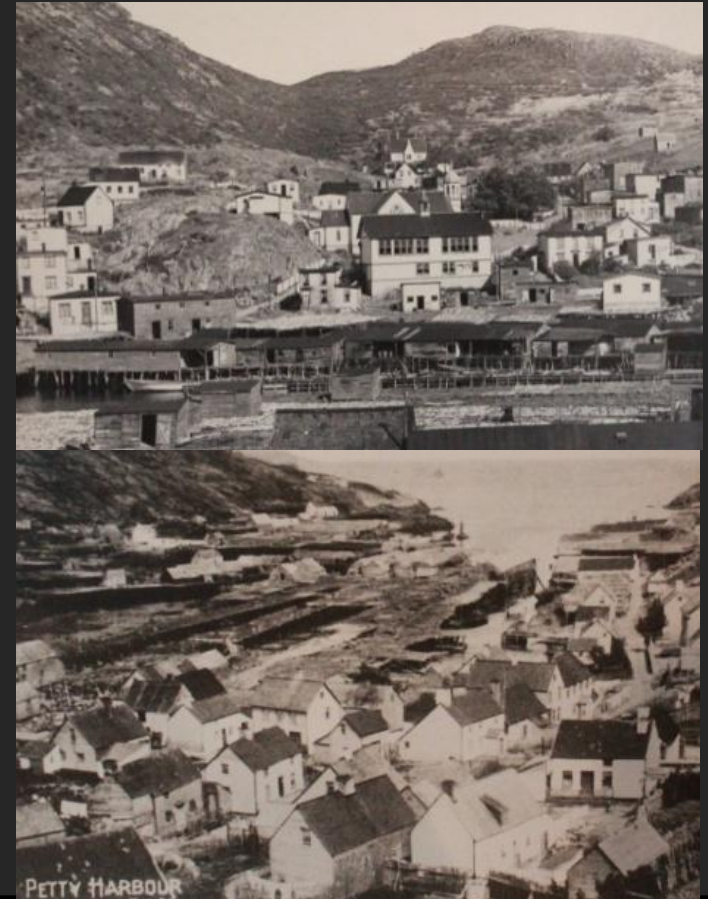
# Location



BUILDING HEALTHY COMMUNITIES

# Historical Background

- 1500s Basque Fishing Station
- Strong Attachment to the Fishery
- Small Harbour, Steep Hills
- Expansion to Maddox Cove



# Historical Background

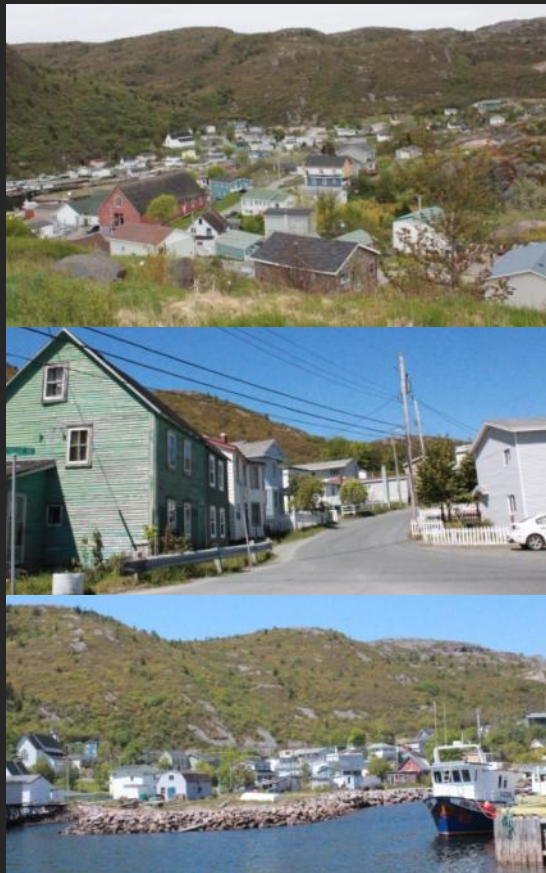
- Post Confederation - Connections to Urban Centres
- 1970s: Residential Subdivision
- 1992: Cod Moratorium
- 2000s: Crab Fishery
- Commuting Workforce





# Community Connections

## Petty Harbour



## Maddox Cove



# Consultation

- Initial Public Meeting
- Small Group Discussions
- Online Survey
- Youth Activities
- Information Materials



BUILDING HEALTHY COMMUNITIES

# Community Health Contribution

- Participation of Health
- Statistics
- Questions
- Walkability Activity
- Kids Walk with Mayor
- Newsletters
- Information Booth

## Town of Petty Harbour-Maddox Cove Municipal Plan Review Online Survey Response Summary



August, 2012  
Project # 123080.00

## Public Consultation Meeting

7:00 PM  
June 26  
Community Centre



The Town of Petty Harbour-Maddox Cove is undertaking a review of its Municipal Plan and would like to hear your thoughts and ideas about:

- The walkability of our community;
- Safety of our streets and neighbourhoods;
- The type and how much future development we need;
- Social and recreational needs of our Town;
- Ideas for the future of the park on Cribbles Road;
- Harbourfront development; and
- Whether we should try and preserve the built heritage of Old Petty Harbour.

Come out and share your thoughts!

Town Council invites residents to attend a meeting to discuss these topics at 7:00pm, Tuesday, June 26, 2012 at the Community Centre in Petty Harbour.

If you are not able to attend the meeting, Council also welcomes your input in writing submitted to:

**Town of Petty Harbour-Maddox Cove**  
email: PFC Box 434 Add. 392 fax: 709-268-2994 email: info@pettyharbour-nl.net

For more information, contact:

**Ann-Marie Caslin, CRCL Limited**  
p: 709-264-8823 e: amcaslin@pettyharbour-nl.net

Scan the QR Code to see the Mayor's report for Petty Harbour-Maddox Cove  
Or visit: <http://www.pettyharbour-nl.net>

Do you agree?  
Come out and let us know!

## TOWN OF PETTY HARBOUR-MADDOX COVE Municipal Plan Review



**What is a Municipal Plan?**  
The Petty Harbour-Maddox Cove Municipal Plan is a document that sets out the vision, goals, and objectives for the town's future. It is a key document for the town's development and is used to guide the town's actions and decisions.

**Issues and Opportunities**

A review of the Petty Harbour-Maddox Cove Plan got underway in May of this year. Since then, our consultants have conducted background research, held a public meeting, organized an online survey, and spoken with a number of government organizations, representatives of community groups, and individuals. From research and consultation, a number of issues and opportunities for the town in the future have emerged that should be addressed in the new Municipal Plan.

**Key Issues and Opportunities**

- **Land Use:** The town has a lot of land that is not being used for development. This is a key issue for the town, as it is important to have enough land for future growth.
- **Infrastructure:** The town's infrastructure is aging and needs to be updated. This includes roads, bridges, and public facilities.
- **Environment:** The town's environment is a key asset and needs to be protected. This includes the harbor, the coastline, and the natural environment.
- **Community:** The town's community is a key asset and needs to be strengthened. This includes promoting local businesses, supporting community groups, and improving public services.

**Next Steps**

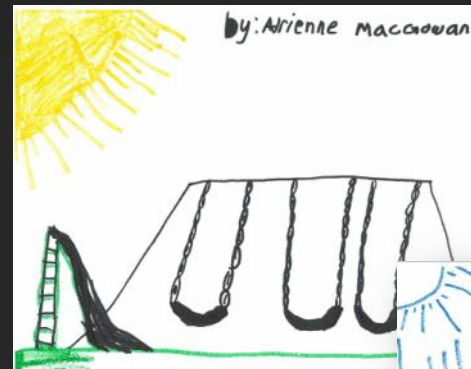
- The town will continue to consult with the community on the issues and opportunities identified in the review.
- The town will develop a new Municipal Plan that addresses these issues and opportunities.
- The town will implement the new Municipal Plan and monitor its progress.



# Public Meeting



# Kids Walk





# Arts & Heritage Festival





# Next Steps

- Community Wellness Plan
- Planner and Public Health Consultant
- MPH Student
- Healthy Built Environment Linkages Toolkit



# Thank You

Mary Bishop, FCIP  
NL CLASP Planning  
Facilitator|CBCL  
Limited

[maryb@cbcl.ca](mailto:maryb@cbcl.ca)

709.364.8623



BUILDING HEALTHY COMMUNITIES

---